



Savitribai Phule shikshan Prasarak Mandal's

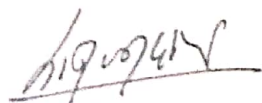
Smt. Kashibai Navale College of Education, Kamlapur

Student Satisfaction Survey 2020-21

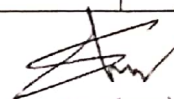
Name of the Student: (Not compulsory)

(In the questionnaire, some questions and statements are given about the study and teaching in your college. Mark (✓) in brackets in front of the correct answer below the question)

	5	4	3	2	1
1	How much of the syllabus was covered in the class?				
	85 to 100% ()	70 to 84% ()	55 to 69% ()	30 to 54% ()	0 to 30% ()
2	How well did the teachers prepare for the classes?				
	Thoroughly ()	Satisfactorily ()	Poorly ()	Indifferently ()	Won't teach at all ()
3	How well were the teachers able to communicate?				
	Always effective ()	Sometimes effective ()	Just satisfactorily ()	Generally ineffective ()	Very poor communication ()
4	The teacher's approach to teaching can best be described as				
	Excellent ()	Very good ()	Good ()	Fair ()	Poor ()
5	Fairness of the Internal evaluation process by the teachers,				
	Always fair ()	Usually fair ()	Sometimes unfair ()	Usually unfair ()	Unfair ()
6	Was your performance in assignments discussed with you?				
	Every time ()	Usually ()	Occasionally/Sometimes ()	Rarely ()	Never ()
7	The Institute takes active Interest in promoting Internship, field visit opportunities for students.				
	Regularly ()	Often ()	Sometimes ()	Rarely ()	Never ()
8	The teaching and mentoring process in your institution cognitive, social and emotional growth.				
	Significantly ()	Very well ()	Moderately ()	Marginally ()	Not at all ()
9	The Institution provides multiple opportunities to learn and grow.				
	Strongly agree ()	Agree ()	Neutral ()	Disagree ()	Strongly disagree ()
10	Teachers Inform you about your expected competences, course outcomes and programme outcomes.				
	Every time ()	Usually ()	Occasionally/Sometimes ()	Rarely ()	Never ()
11	Your mentor does a necessary follow-up with an assigned task to you.				
	Every time ()	Usually ()	Occasionally/Sometimes ()	Rarely ()	I don't have a mentor ()


IQAC Coordinator

Smt. Kashibai Navale College of Education
Kamlapur Tal Sangola Dist. Solapur


Principal

Smt. Kashibai Navale College
of Education (B.Ed. College)
Kamlapur Tal Sangola Dist. Solapur



	The teachers illustrate the concepts through examples and applications.				
	Every time ()	Usually ()	Occasionally/Sometimes ()	Rarely ()	Never ()
13	The teachers Identify your strengths and encourage you with providing right level of challenges.				
	Fully ()	Reasonably ()	Partially ()	Slightly ()	Unable to ()
14	Teachers are able to identify your weaknesses and help you to overcome them.				
	Every time ()	Usually ()	Occasionally/Sometimes ()	Rarely ()	Never ()
15	The Institution makes effort to engage students in the monitoring, review and continuous quality improvement of the teaching learning process.				
	Strongly agree ()	Agree ()	Neutral ()	Disagree ()	Strongly Disagree ()
16	The institute/teachers use student centric methods, such as experiential learning, participative learning and problem solving methodologies for enhancing learning experiences.				
	To a great extent ()	Moderate ()	Somewhat ()	Very little ()	Not at all ()
17	Teachers encourage you to participate in extracurricular activities				
	Strongly agree ()	Agree ()	Neutral ()	Disagree ()	Strongly Disagree ()
18	Efforts are made by the institute/ teachers to inculcate soft skills, life skills and employability skills to make you ready for the world of work.				
	To a great extent ()	Moderate ()	Somewhat ()	Very little ()	Not at all ()
19	What percentage of teachers use ICT tools such as LCD projector, Multimedia, etc. while teaching.				
	90% वर ()	70-89% ()	50-69% ()	30-49% ()	29% च्या खाली ()
20	The overall quality of teaching-learning process in your Institute is very good.				
	Strongly agree ()	Agree ()	Neutral ()	Disagree ()	Strongly Disagree ()
21	Give three observation/suggestions to improve the overall teaching-learning experience in your institution.				
A					
B					
C					

IQAC Coordinator

Smt. Kashibai Navale College of Education
Kamlapur Tal. Sangola Dist. Solapur

Principal

Smt. Kashibai Navale College
of Education (B.Ed. College)
Vp. Kamalapur Tal. Sangola Dist. Solapur



Student Satisfaction Survey 2020-21

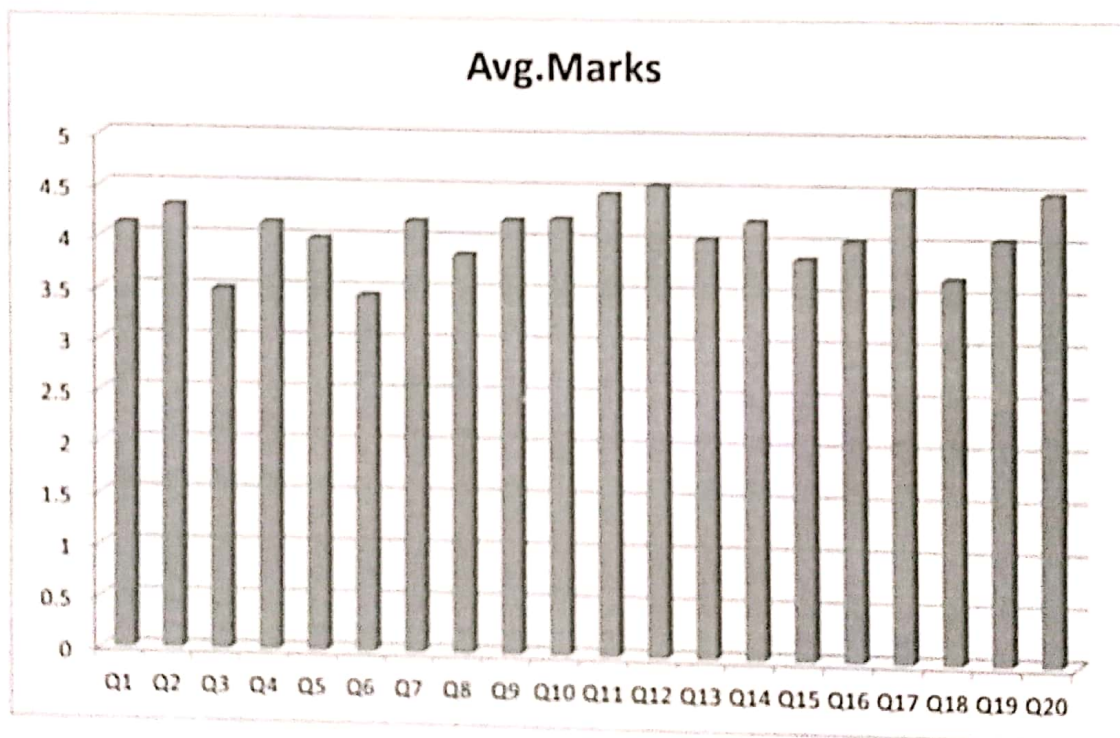
Key Indicator - 2.7.1

Under Criterion II of Teaching – Learning and Evaluation (From Students)

Average Marks per question (5-point Scale)

Que No	Q1	Q2	Q3	Q4	Q5	Q6	Q7	Q8	Q9	Q10
Avg Marks	4.13	4.31	3.5	4.15	4	3.45	4.18	3.86	4.2	4.22

Que No	Q11	Q12	Q13	Q14	Q15	Q16	Q17	Q18	Q19	Q20
Avg Marks	4.47	4.56	4.04	4.22	3.86	4.04	4.54	3.68	4.06	4.5



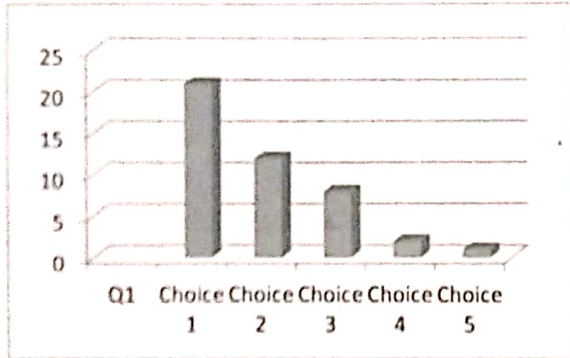


Student Satisfaction Survey 2020-21

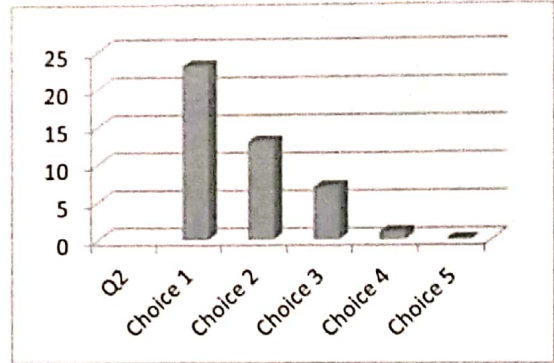
Graphical Presentation

Choice 1 indicates highest marks and Choice 5 indicates lowest marks

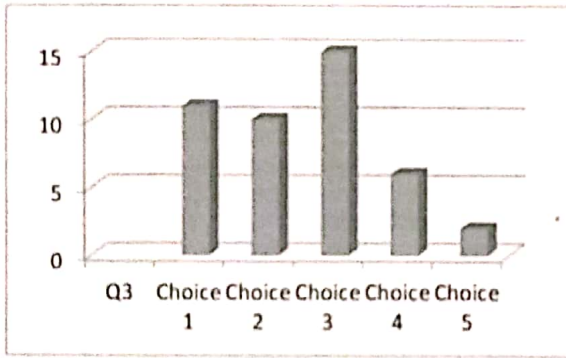
Q1



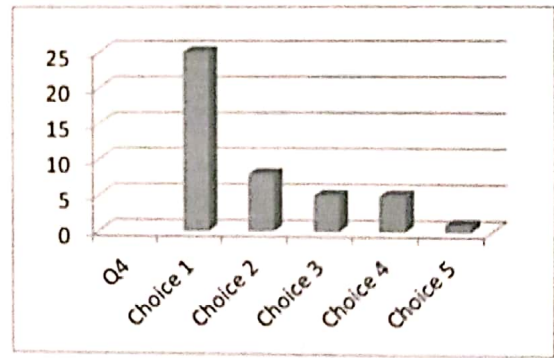
Q2



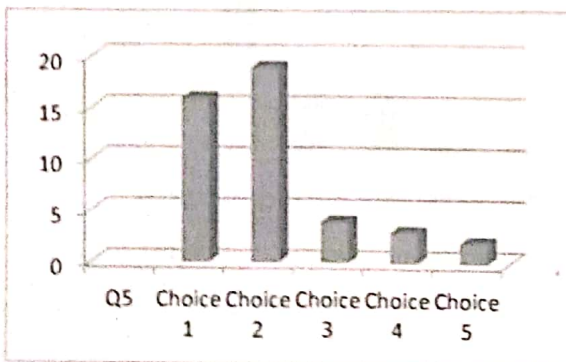
Q3



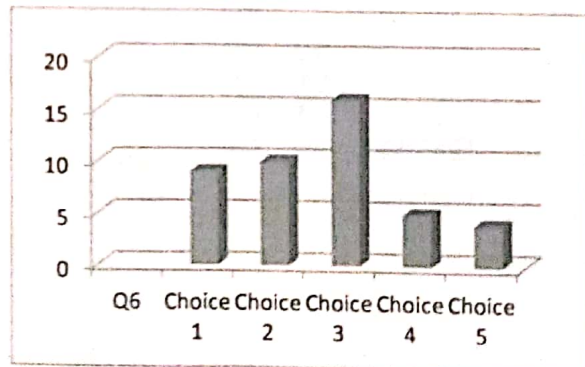
Q4



Q5

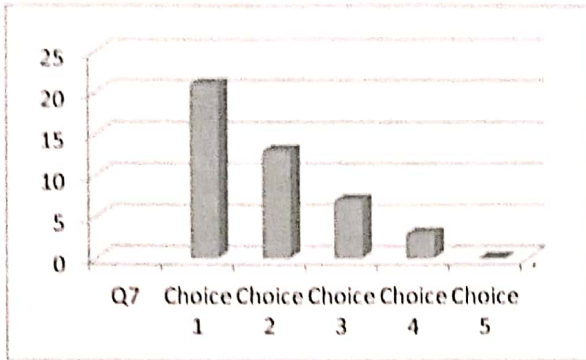


Q6

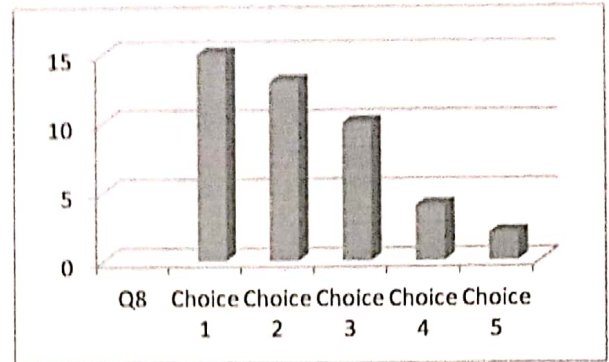




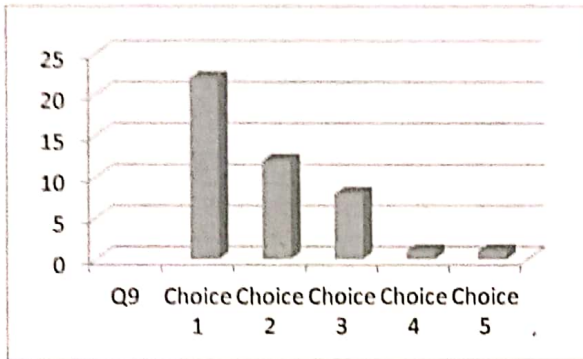
Q7



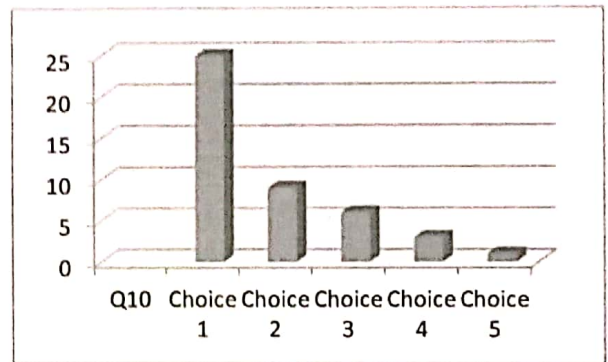
Q8



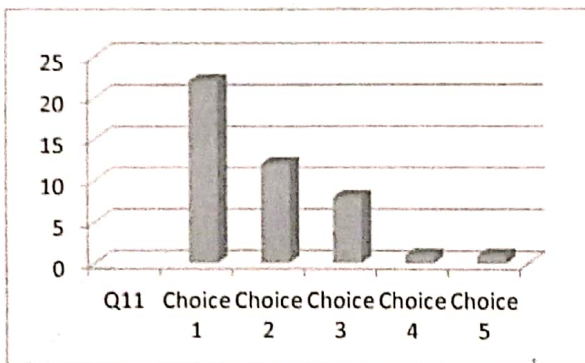
Q9



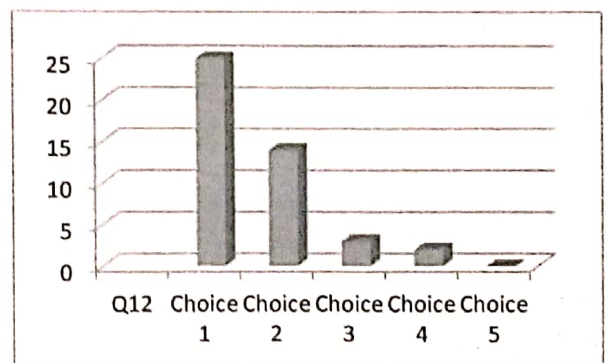
Q10



Q11

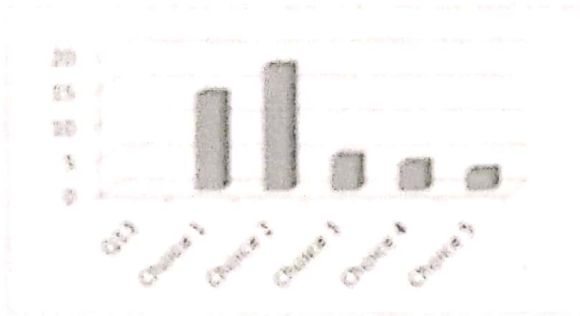


Q12

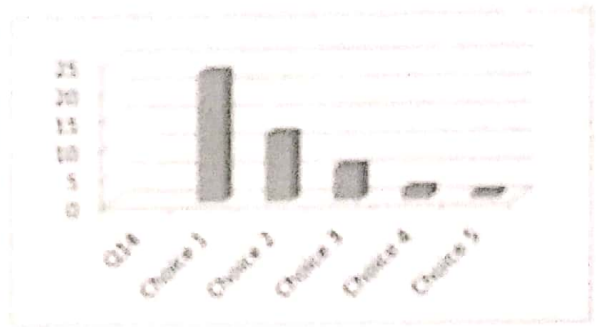




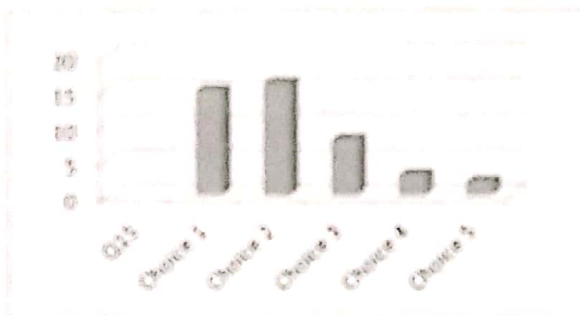
Q13



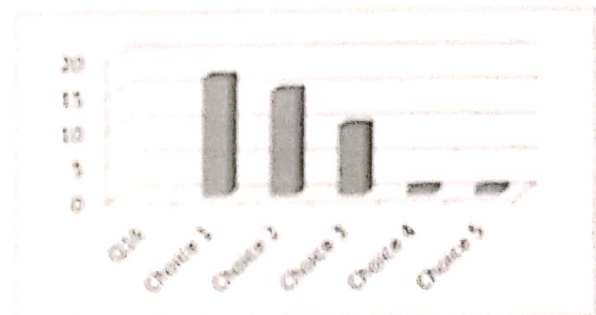
Q14



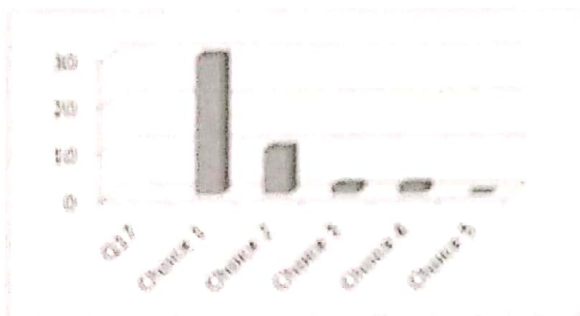
Q15



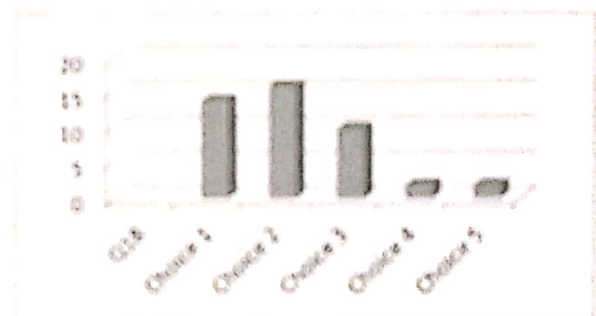
Q16



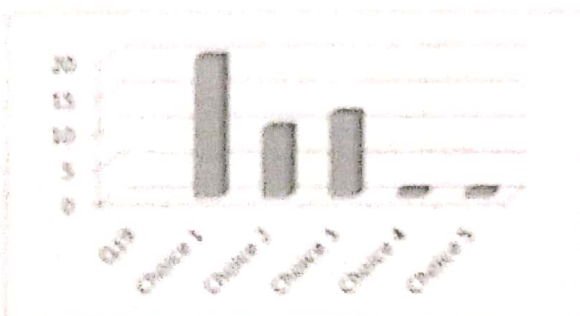
Q17



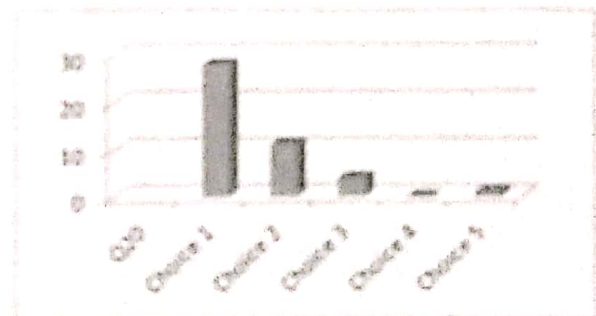
Q18




Q19



Q20




IQAC Coordinator
Smt. Kashibai Navale College of Education
Karnalpur Tal. Sangli Dist. Solapur


Principal
Smt. Kashibai Navale College
of Education (B. Ed College)
at Karnalpur Tal. Sangli Dist. Solapur.